



Learning together



Our school

Christelijk College Groevenbeek is a school that offers all educational routes available to secondary education in The Netherlands. We have two locations, one in Ermelo and another in Putten.

The school in Ermelo consist of two conjoined, spacious and modern buildings. One wing accommodates approximately 1400 pupils (HAVO, preparing for higher vocational education)/VWO, preparing for academic education) and the other houses around 1200 pupils (VMBO preparing for vocational education).

Groevenbeek educates all these students with the help of 250 employees.

The Putten location has approximately 450 students and 50 employees.



Our Mission

Groevenbeek is an open Christian school where the bible serves as our source of inspiration and guidance.

Our goal is to guide and educate pupils whilst they become well-balanced young people with a sense of self-worth and confidence. We hope all our students grow to be socially involved and responsible cosmopolitans.

Groevenbeek strives to be an open and respectable learning environment, where everyone feels safe and respected.

We stimulate every student to develop their own unique talent. We actively monitor the individual educational needs and subsequently offer fitting professional programmes, routes and training to accommodate each pupil.



Our core values

Groevenbeek has a few specific core values.

Versatility, Groevenbeek offers students many choices and options. Personal educational routes, studying Chinese, (extracurricular) activities such as MAS (mandatory task hours of voluntary social work) and excursions to countries such as England, Spain and Germany are only a few examples. Every opportunity for a pupil to develop specific talents and interests.

Compassion and confidence, Groevenbeek strives to be compassionate and respectful to and for everyone that is a part of our school system. Employees, teachers, students, parents and many more, are all part of a successful learning experience.

ICT plays an important part of said learning experience. Every student owns an Ipad, and digital learning materials are key at Groevenbeek.



Internationalization

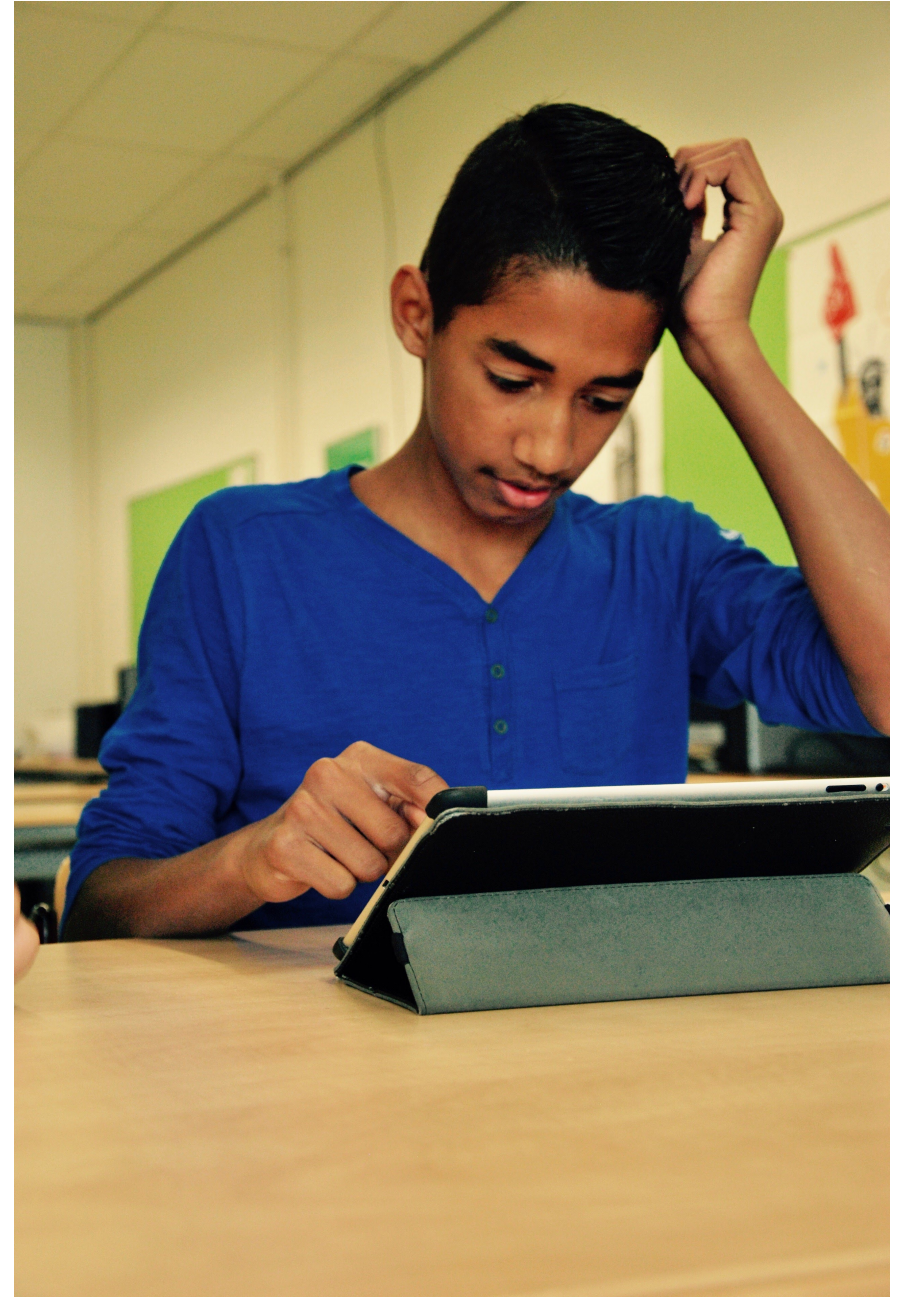
At Groevenbeek, students are prepared to successfully continue studying and to contribute to a fast-paced society.

Internationalization, plays an important part in achieving that goal.

Our internationalization programme is based on the following:

- learn to know
- learn to do
- learn to be
- learn to live together

We are happy to have partner schools in many different cities, such as Dortmund (Germany), Toulon (France), Melbourne (Australia) Olot (Spain) and Zhenjiang (China).



Contact information

We hope this brief introduction gives you an impression of our school.

www.groevenbeek.nl

Groevenbeek Ermelo
Paul Krugerweg 44-50
3851 ZJ Ermelo

Groevenbeek Putten
Korenlaan 1
3881 DA Putten

Phone
+31 341 27 49 50

Email
info@groevenbeek.nl

